



LEK-431/432 APP

User manual

LEK-431 APP



LEK-432 APP



Model	LEK-431 APP	LEK-432 APP
Programs	Speed, brightness, 20 colour changing programs, music sync mode, twinkling wheel speed, on/off	
Remote controller	Yes, RF and Bluetooth app	
Light source type	LED CREE	
CRI (Ra>):	70	
IP rating	IP33	
Light colour mode	RGBW	
Working voltage	DC 12 V	
Power	13 W	25 W
Material of housing	Aluminium	
Light engine dimensions	126 mm (L) x 125 mm (W) x 88 mm (H)	
Net weight	0.85 kg	
Fibre optic port diameter	17.3 mm	2 x 17.3 mm
Maximum number of fibre optic bundles at 0.75 mm diameter	400	2 x 400
Lifetime	50,000 hours	
Warranty	2 years	
Package dimensions (excluding fibre optic bundle)	192 mm (L) x 160 mm (W) x 95 mm (H)	
Weight with packaging	0.9 kg	



Safety notices

Electrical work safety advice and tips

- Make sure the input voltage is correct.
- Avoid placing the light engine in the rain or in moist areas. Please ensure that the light engine has sufficient ventilation and is not placed in a completely sealed area.
- Do not open the LED light engine for inspection or re-wire the electronic circuits if you are not a professional. Opening the light engine might void your warranty.
- Avoid any debris on top or around the light engine as it can cause poor heat dissipation.
- Avoid using the device above 40 C temperature.

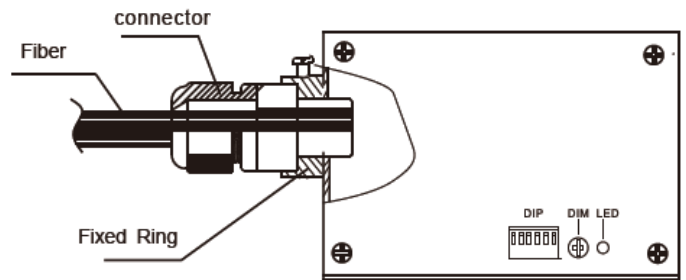
DIY tips and safety advice

- This task will involve working at height. A safe system of work should be established and maintained, in order to prevent injury.
- Consider your safety! Think about the potential risks and dangers of the work and the steps you should take to avoid them.
- Personal protective equipment. Make sure that you are equipped with suitable and sufficient personal protective equipment. This could include eye protection, face mask, protective overalls, safety footwear and gloves.
- Ensure that the work area is sufficiently illuminated.
- Check that the tools you will be working with are in a good operating condition. For the installation, you will need a cordless drill, epoxy glue, side cutters or scissors and drill bits.



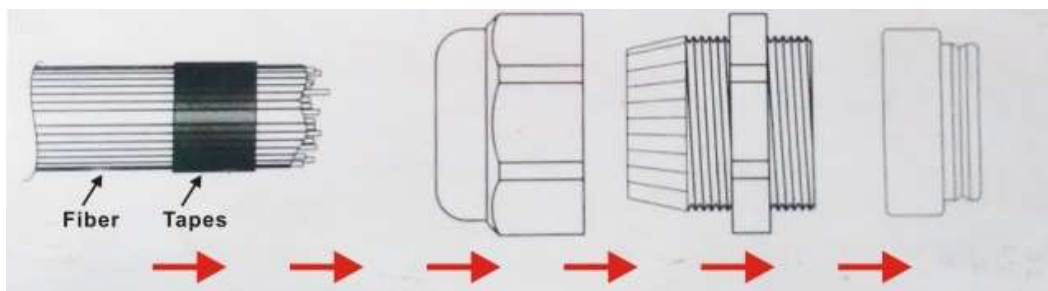
Connection method between optical fibres and the light engine

Your fibre optic bundle will come with the connector fittings ready to connect to the light engine.



If you need to adjust your bundle or you're making your own, follow the steps below.

1. Align all the optical fibre ends and fasten with tapes which can resist temperature over 130°C
2. Pass the fibres through the connector and fasten the rotary tensioner until the fibres are tightened.



3. Cut the fibre bundle to a flat surface with a heat-knife or blade.



4. Make sure that the optical fibre bundle head is smooth and clean to ensure even light distribution.
5. Place the fibre optic bundle's connector into the light engine's port connector. Fasten the bundle with the screw on the top of the light engine's port connector.



Remote controller operation



Troubleshooting for remote controller connection issues:

- Make sure that the remote controller is switched on by pressing the “On” button
- Check if the battery is operational in the remote controller: Press a button on the remote and the indicator light should flash up. If the light doesn’t flash up, it means that there is either no battery in the remote or the battery needs replacing.
- If the remote’s control light flashes up, check whether the green indicator light on the back of the light engine flashes up, when a button is pressed on the remote. If the indicator light is not flashing up,



LEK-431/432 APP

User manual

restart the device and test again. If the indicator light still doesn't flash up, try re-pairing the remote controller with the light engine. If the pairing didn't work, please contact your supplier.

- Pairing your remote controller with the light engine:
 1. Make sure the light engine is switched off
 2. Press the “FADE3” and “FADE7” buttons at the same time within the remote controller's range.
 3. The light engine will flash in white if the pairing was successful.

Bluetooth App control guide

1. Download the Bluetooth App

Option 1: QR code:



- Both Android and Apple phones can scan the QR code to download the app

Option 2: App store:



- For Apple system: go to the App Store and search for “my smartLED” to download the App
- For Android system: go to the Google Play Store and search for “my smartLED” to download the App

2. Connect your Bluetooth device with the app
 - a. Turn on Bluetooth on your mobile phone
 - b. Power on the light engine
 - c. Open the App on your mobile phone
 - d. The App will automatically connect to light engine

Important notes

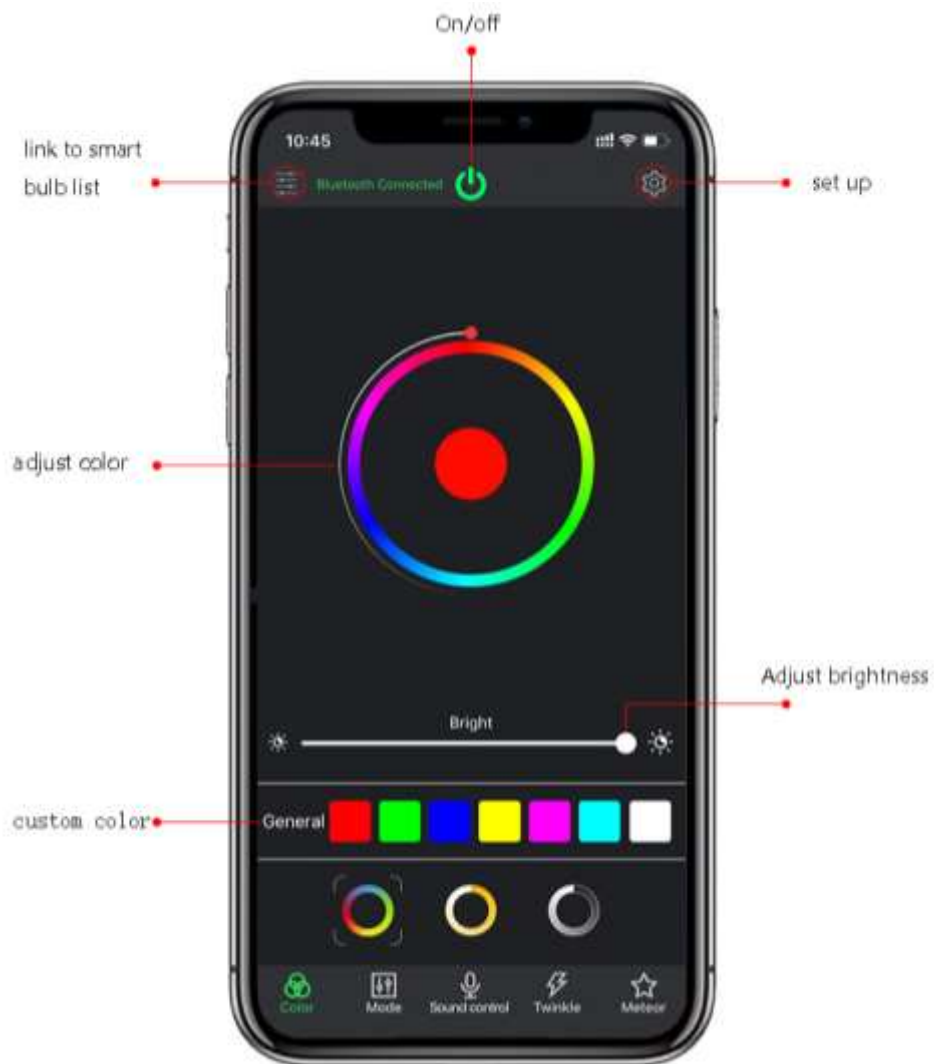
- Do not connect your mobile phone manually to the light engine in your mobile phone's Bluetooth settings
- One mobile phone can connect to and control multiple light engines, but one light engine can only be connected to and controlled by one mobile phone at a time



LEK-431/432 APP

User manual

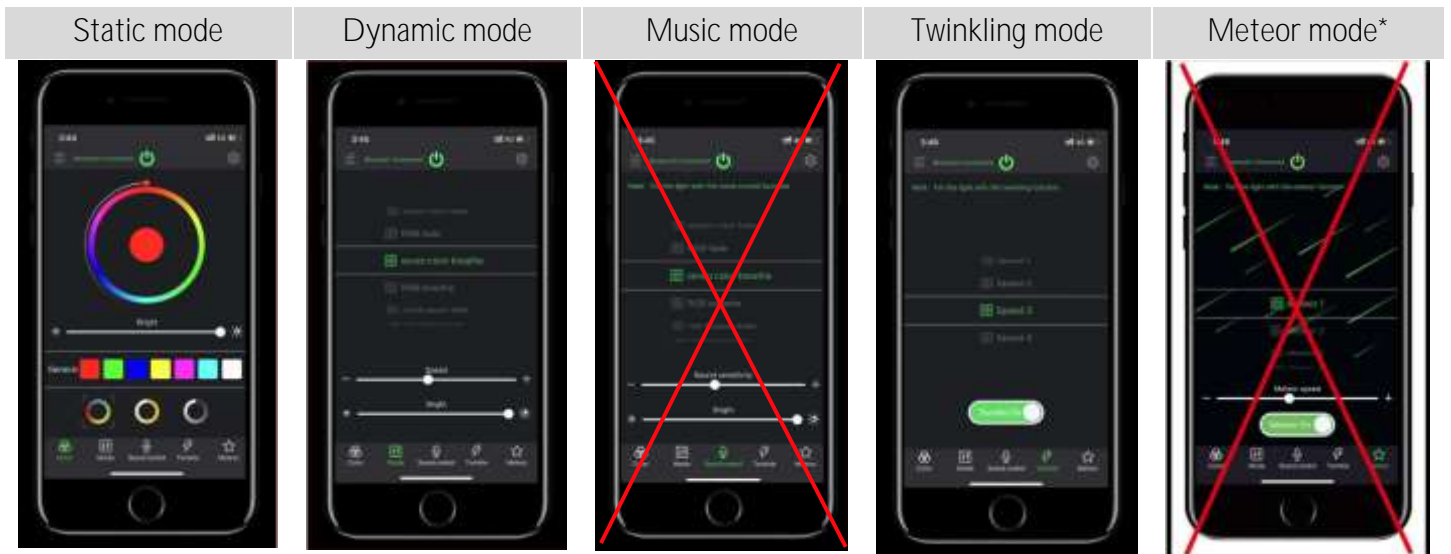
3. Operation and modes





LEK-431/432 APP

User manual



* “Music mode” and “Meteor” mode is not supported with this light engine.

4. Bluetooth connection settings

- a. Open the App and click on “Device Management” to see all connected devices



- b. Rename connected devices in the App



Click "Rename"



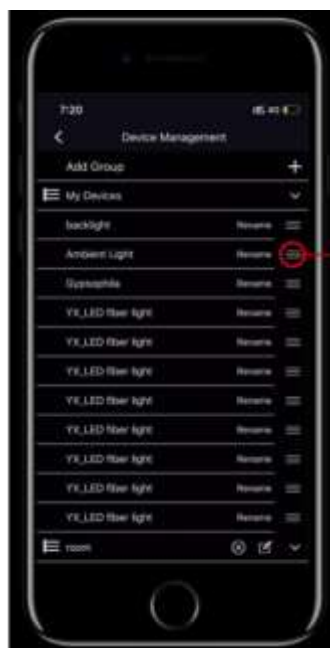
Rename device

c. Group devices in the App

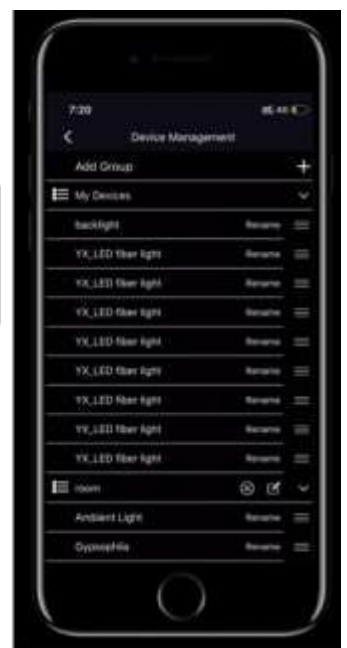


Click to add device group

Name the device group



Hold the move icon and drag to the new group





5. Troubleshooting for Bluetooth connection issues

- Check that the light engine is powered on.
- Check that the Bluetooth is turned on the mobile device.
- Check if another mobile phone is already connected to the light engine. If another mobile phone is already connected to the light engine, disconnect it first.
- If necessary, reconnect the mobile phone with the light engine: (1) exit the App, (2) turn off Bluetooth on the mobile phone, (3) turn on Bluetooth on the mobile phone, (4) Re-open the App. The App should automatically connect to the light engine.