



CL-HZC Make-up mirror with LED light

User manual



Technical specification

Model	CL-HZC
Main features	Battery-powered, dimmable, colour temperature change feature
Battery	5 V / 1 A – 2600 mA Lithium battery (micro-USB charging port)
Power	2 W
Light source type	SMD 2835 white LED
LED quantity (pcs)	80
CRI (Ra>):	>90
IP rating	IP 20
Light colour	White 3000 K - 6000 K
Luminous flux	65 +/- 5%
Dimming range	10% - 100%
Light angle	120°
Operation modes	On / Off, Colour temperature adjustment, Brightness adjustment
Operation time	5+ hours
Charge time	3.5 – 4 hours
Operating temperature	-10°C - 40°C (25°C is the most optimal)
Material & colour of housing	Chrome plating + ABS (red back with UV paint) + PC (milk white front rim)
Product size	Ø 200 x 320 x 54.5 mm
Lifetime	50,000 hours
Warranty	2 years
Package dimensions	240mm (L) x 234mm (W) x 104mm (H)
Weight with packaging	1.15 kg



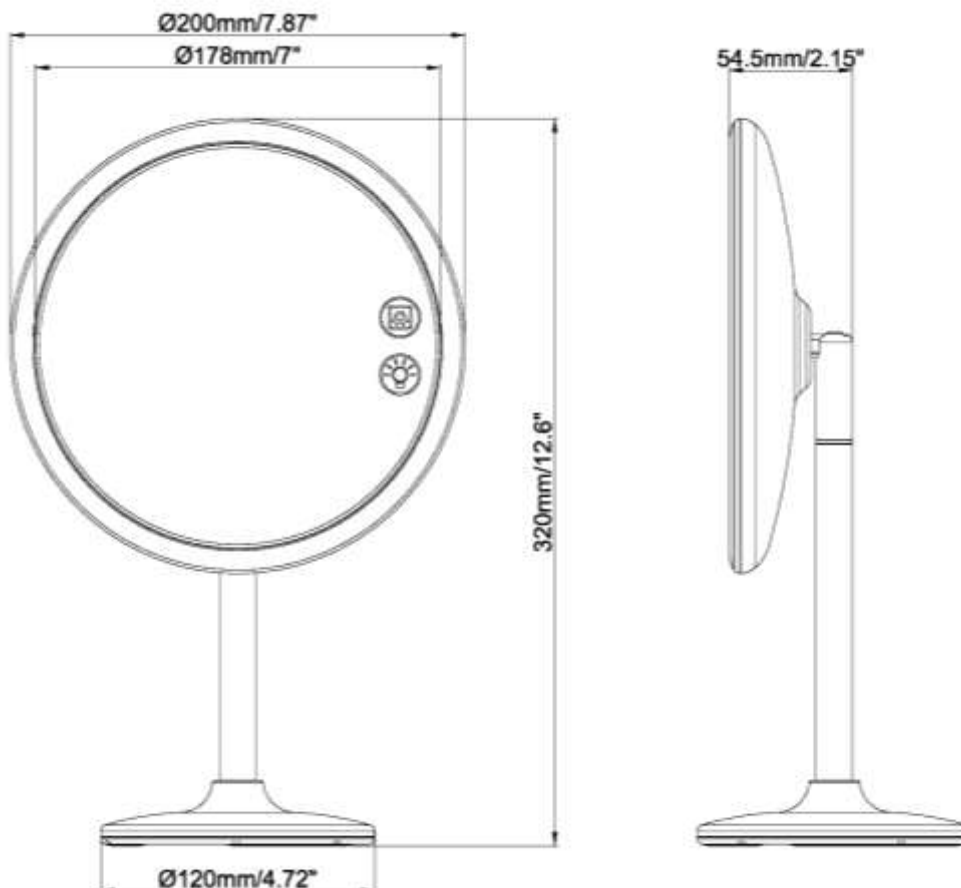
CL-HZC Make-up mirror with LED light

User manual

Safety notices

- Do not use if the mirror or the back cover is damaged as the fragments can cause harm
- Do not look directly in the LED ring light around the mirror for long as it can cause discomfort or damage to your eyes.
- Keep away from inflammable and explosive materials when charging. The charging time should not exceed 12 hours. Try to avoid using while charging.
- Avoid placing the light in the rain, outdoors or in moist areas as it may damage or short-circuit the device.
- Do not place the product into fire, open flame or hot surface (above 60°C) as it may cause combustion or explosion.
- Do not open the LED light for inspection or re-wire the electronic circuits if you are not a professional. Opening the light engine might void your warranty.
- Avoid using the device under -10°C and above 40°C temperature.

Product dimensions



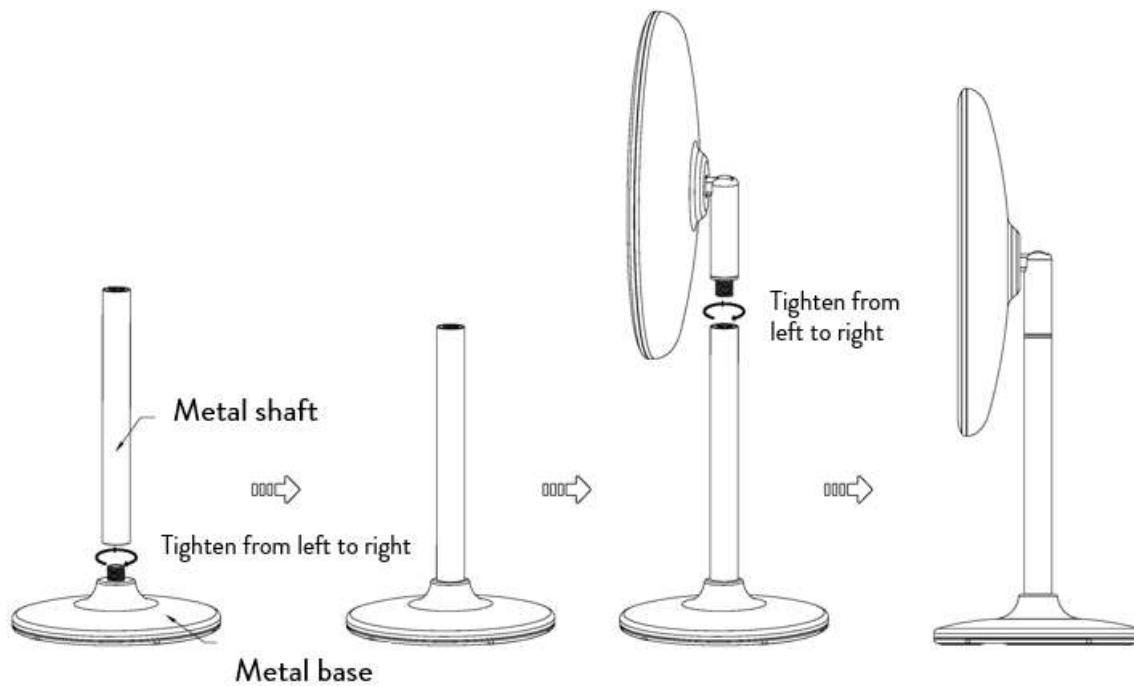


CL-HZC Make-up mirror with LED light

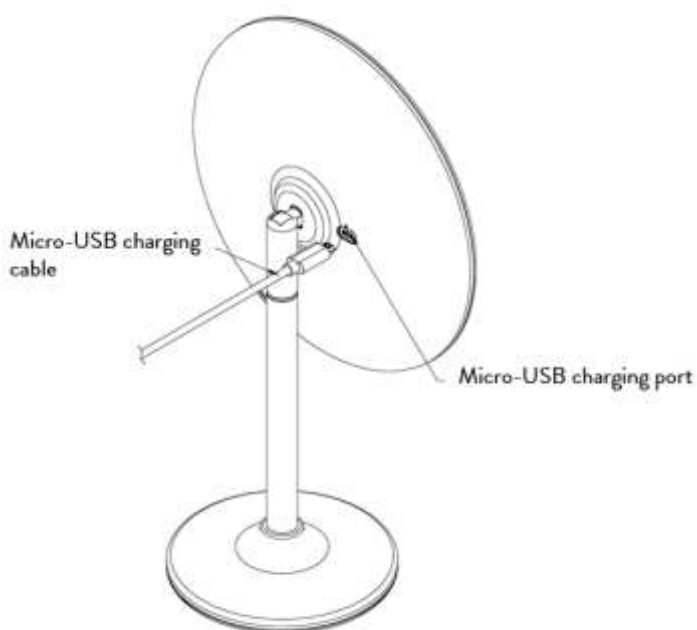
User manual

Assembly instructions

- Tighten the internal thread and external thread corresponding to the metal connecting shaft and the metal base from left to right.



Charging diagram



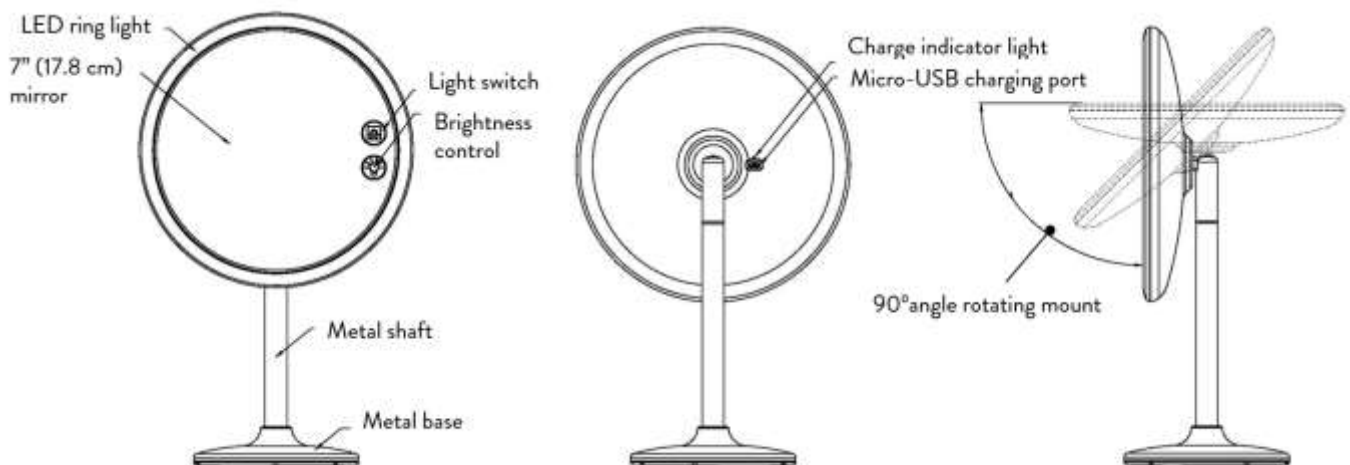


CL-HZC Make-up mirror with LED light

User manual

Operation

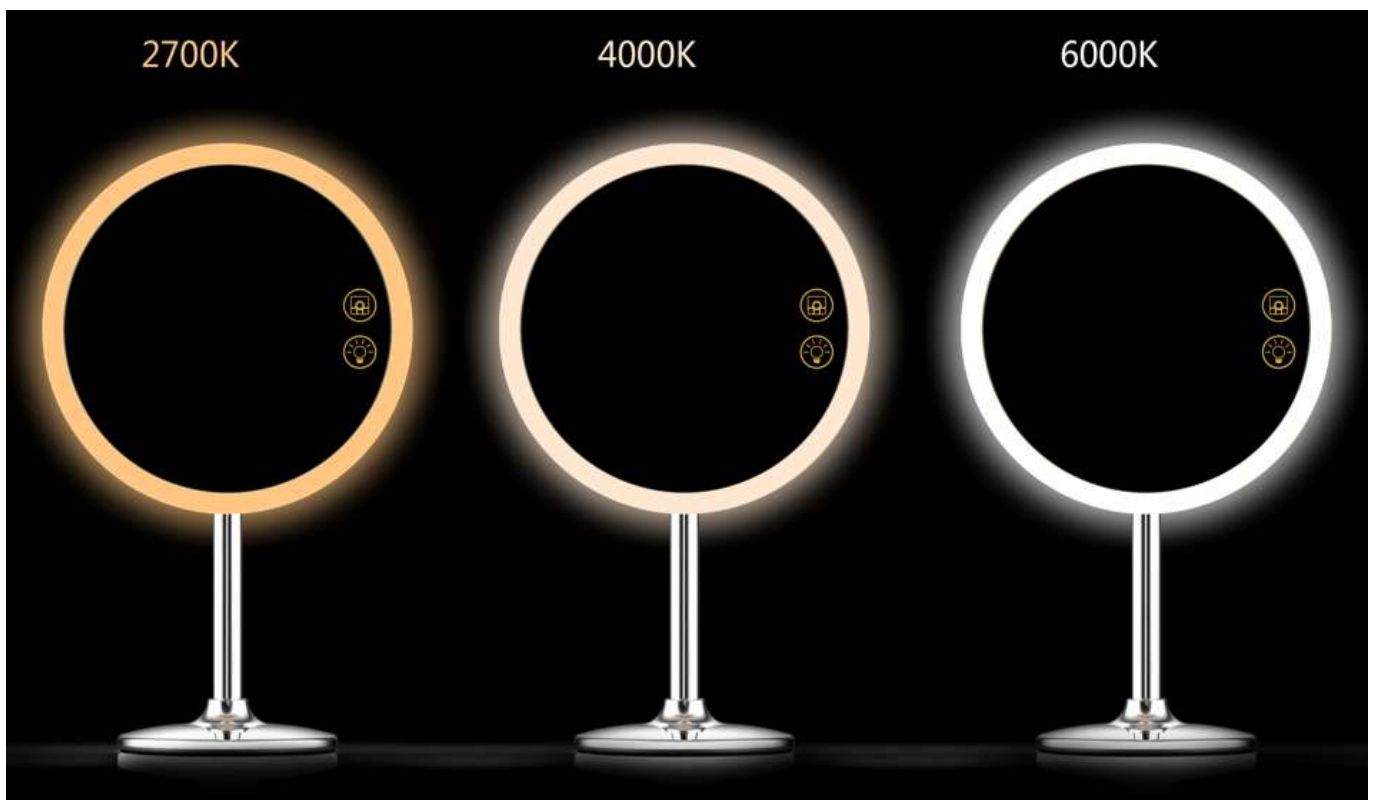
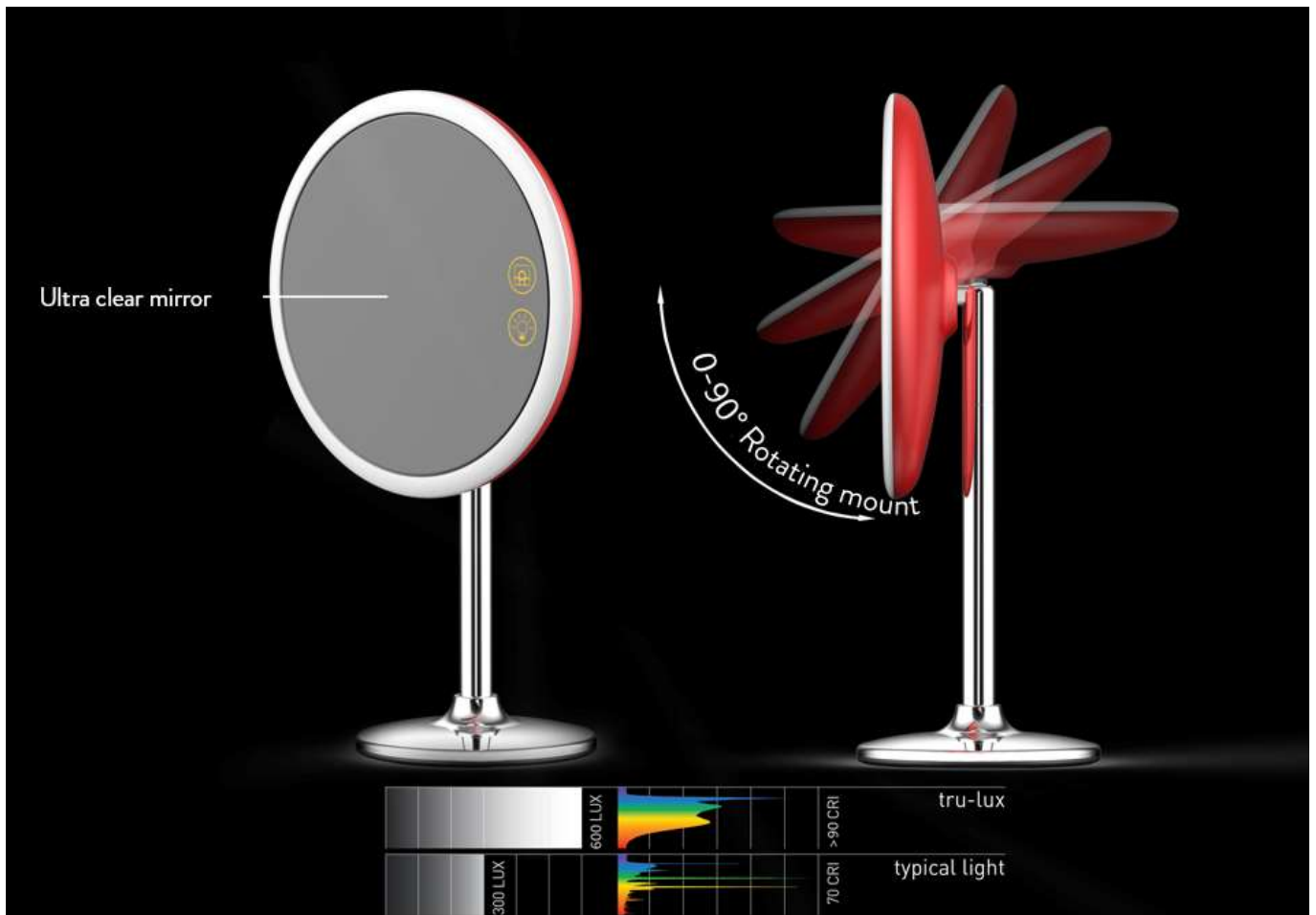
- Charge the device fully before first use. The indicator light will be red while charging and turn to blue once fully charged
- The LED ring light can be operated with the two touch buttons located on the front of the mirror:
 - Light switch: Turn the light on/off and adjust colour temperature
 - Short pressing the button will circle through the following modes:
 - Off
 - Warm white
 - Cold white
 - Neutral white
 - Brightness control: pressing the button while the light is on will increase/decrease the brightness. Press and hold to decrease the brightness. Release the button, then press and hold again to increase brightness.





CL-HZC Make-up mirror with LED light

User manual





CL-HZC Make-up mirror with LED light

User manual

<p>Model number: CL-HZC-SLVR Made in China Manufacturer: Cononlux Technology Co., Limited (Block B, Liyuan Industrial Park, Shiyan Town, Baoan District, Shenzhen, China) Importer: Stellar Lighting Ltd. (5 London Wall Buildings, London, EC2M 5NS, UK) Contact details: www.stellarlighting.co.uk/contact</p>	<p>CE</p> 
	